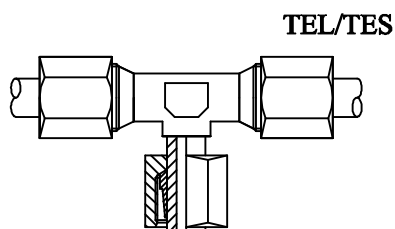
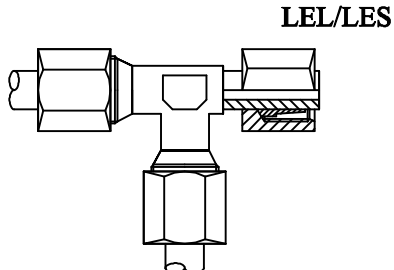


RACCORDI OLEODINAMICI ORIENTABILI DIN 2353
in acciaio zincato e inox AISI 316

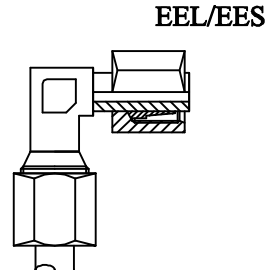
HYDRAULIC ADJUSTABLE FITTINGS DIN 2353
in galvanized steel and stainless steel AISI 316



Adjustable equal Tee
Raccordo orientabile a Tee



Adjustable male stud Tee-stud barrel
Raccordo orientabile a L



Adjustable male stud elbow
Raccordo orientabile a gomito

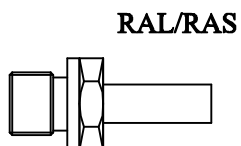
L =serie leggera (light)

Diam. tubo/hose	6	8	10	12	15	18	22	28	35	42
PN [bar]	250	250	250	250	250	160	160	100	100	100

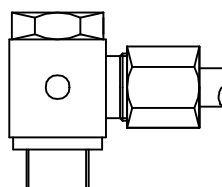
S =serie pesante (heavy)

Diam. tubo/hose	6	8	10	12	14	16	20	25	30	38
PN [bar]	640	640	640	640	640	400	400	400	250	250

WSVL/WSVS



Stud/standpipe adaptors
Raccordo diritto per combinazioni



Banjos
Raccordo orientabile

L =serie leggera (light)

Diam. tubo/hose	6	8	10	12	15	18	22	28	35	42
PN [bar]	250	250	250	250	250	160	160	100	100	100
Gas	1/8	1/4	1/4	3/8	1/2	1/2	3/4	1"	1.1/4	1.1/2
Metrica	10x1.5	12x1.5	14x1.5	16x1.5	18x1.5	22x1.5	26x1.5	33x2	42x2	48x2

S =serie pesante (heavy)

Diam. tubo/hose	6	8	10	12	14	16	20	25	30	38
PN [bar]	640	640	640	640	640	400	400	400	250	250
Gas	1/4	1/4	3/8	3/8	1/2	1/2	3/4	1"	1.1/4	1.1/2
Metrica	12x1.5	14x1.5	16x1.5	18x1.5	20x1.5	22x1.5	27x2	33x2	47x2	48x2