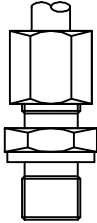


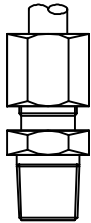
**RACCORDI OLEODINAMICI DI ESTREMITA' DIN 2353
in acciaio zincato e inox AISI 316**

**HYDRAULIC STUD FITTINGS DIN 2353
in galvanized steel and stainless steel AISI 316**



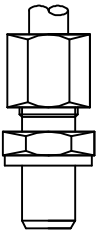
AL/AS

Male stud coupling parallel thread
Raccordo diritto maschio fil. cilindrica



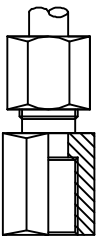
AKL/AKS

Male stud coupling thread tapered
Raccordo diritto maschio fil. conica



ASL/ASS

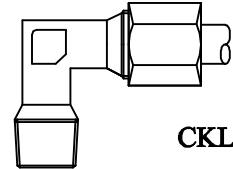
Welding bosses
Raccordo diritto saldabile



GAIL/GAIS

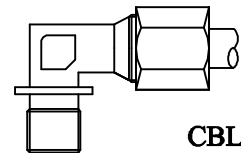
Female stud coupling
Raccordo diritto con estremità femmina

	Diam. tubo hose	PN [bar]	Gas BSP	Metrica
L-serie leggera (light)	6	250	1/8	10x1.5
	8	250	1/4	12x1.5
	10	250	1/4	14x1.5
	12	250	3/8	16x1.5
	15	250	1/2	18x1.5
	18	160	1/2	22x1.5
	22	160	3/4	26x1.5
	28	100	1"	33x2
	35	100	1.1/4	42x2
	42	100	1.1/2	48x2
S-serie pesante (heavy)	6	640	1/4	12x1.5
	8	640	1/4	14x1.5
	10	640	3/8	16x1.5
	12	640	3/8	18x1.5
	14	640	1/2	20x1.5
	16	400	1/2	22x1.5
	20	400	3/4	27x2
	25	400	1"	33x2
	30	250	1.1/4	42x2
	38	250	1.1/2	48x2



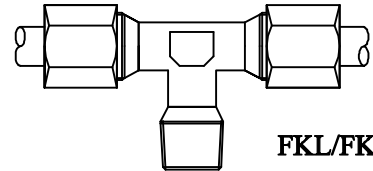
CKL/CKS

Stud elbow tapered thread
Raccordo a gomito fil. conica



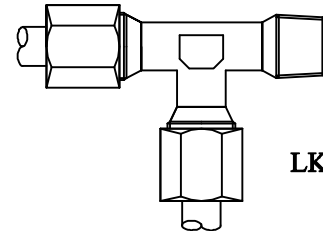
CBL/CBS

Stud elbow parallel thread
Raccordo a gomito fil. cilindrica



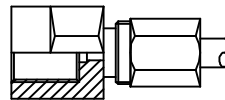
FKL/FKS

Stud branch Tees tapered thread
Raccordo a Tee fil. conica



LKL/LKS

Stud barrel Tees tapered thread
Raccordo a L fil. conica



Gauge coupling
Raccordo per manometro

Diam. tubo	6	8	10	12
MAVL	1/4	1/4	1/4	1/4
MAVS	1/2	1/2	1/2	1/2