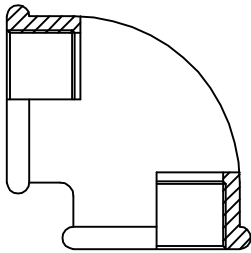


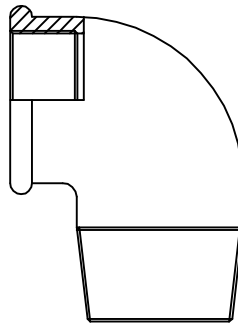
**RACCORDERIA IN OTTONE E ACCIAIO INOX AISI316
FITTING IN BRASS AND STAINLESS STEEL AISI 316**

**GFF/OT
GFF/BPX**



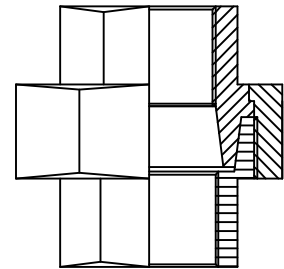
**Gomito a 90° F.-F.
F.-F. 90° elbow.**

**GMF/OT
GMF/BPX**



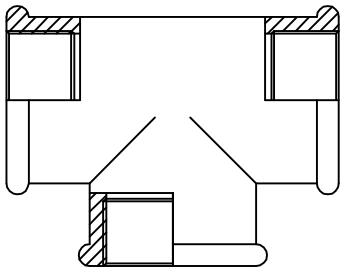
**Gomito a 90° M.-F.
M.-F. 90° elbow.**

**B3P/OT
B3P/BPX**



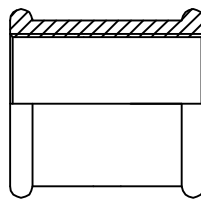
**Bocchettone F. F. a sede conica.
F. F. tapered seat union.**

**TEF/OT
TEF/BPX**



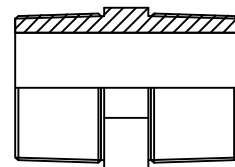
**Raccordo a T F. F. F.
F. F. F. Tee union.**

**M/OT
M/BPX**



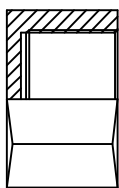
**Manicotto.
F. coupling.**

**NK/OT
NK/BPX**



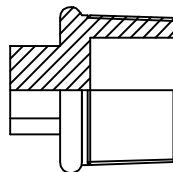
**Vite doppia M.
Double screw M. nipple.**

**TPF/OT
TPF/BPX**



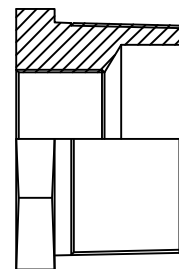
**Calotta esagonale F.
Hexagonal F. stopper.**

**TPM/OT
TPM/BPX**



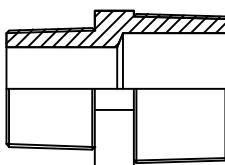
**Tappo M. testa quadra.
M. stopper.**

**RIR/OT
RIR/BPX**



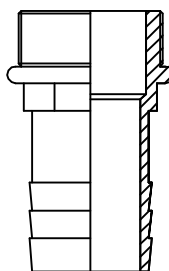
**Riduzione M.-F.
M.-F. reducer.**

**NR/OT
NR/BPX**



**Vite doppia ridotta M.-M.
Reducing M. nipple.**

ROMA



**Portagomma in ottone tipo "Roma".
Brass hose connection "Roma" pattern.**

Materiali/materials:
OT = ottone/brass;
BPX = acciaio AISI 316
stainless steel AISI 316.
Filettature/thread:
da/from 1/8" a/to 2".