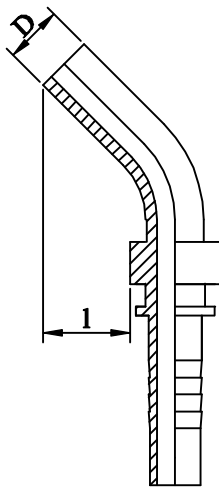
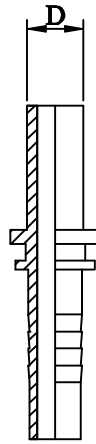


**HYDRAULIC FITTINGS STANDPIPE  
in galvanized steel and stainless steel AISI 316**

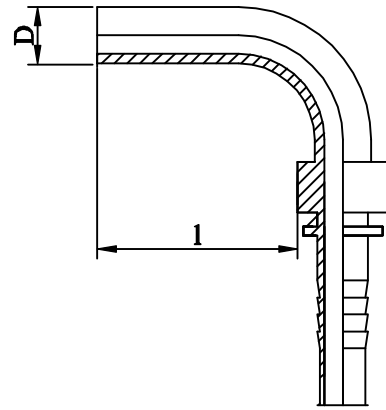
**RACCORDI OLEODINAMICI A CODULO  
in acciaio zincato e inoX AISI 316**



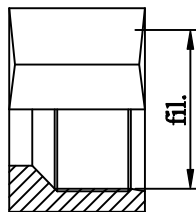
Standpipe 45°  
F45 =estremità tubolare 45°



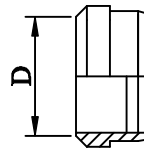
Standpipe  
F =estremità tubolare



Standpipe 90°  
F90 =estremità tubolare 90°



Nut  
Dado di serraggio



Cutting ring  
Anello di serraggio

**Standpipe/coduli**

Diam. tubo I. O. hose	6	8	10	12	16	20	25	32	40
	1/4	5/16	3/8	1/2	5/8	3/4	1"	1.1/4	1.1/2
D [mm]	6	10	10	14	18	18	25	35	42
	8	12	12	15	20	20	28	38	
	10		14	16	22	22	30		
	12					25			

**Thread nut/filettatura dado**

D [mm]	6	8	10	12	15	18	22	28	35	42
fil. L	12x1.5	14x1.5	16x1.5	18x1.5	22x1.5	26x1.5	30x2	36x2	45x2	52x2
D[mm]	6	8	10	12	16	20	25	38		
fil. S	14x1.5	16x1.5	18x1.5	20x1.5	24x1.5	30x2	36x2	52x2		

L =serie leggera (light series); S =serie pesante (heavy series)

N. B.: per la misura l vedere scheda tecnica (for lenght l see data sheet)