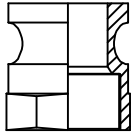
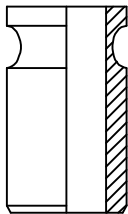


# RACCORDI RAPIDI A LEVA

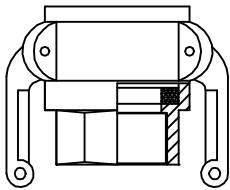
## CAM LOCK COUPLING



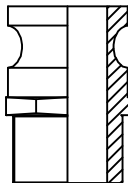
ILA = maschio filettato femmina/  
female thread adaptor.



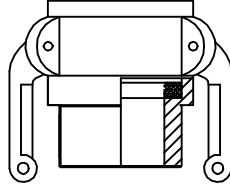
ILAW = maschio a saldare/  
butt weld adaptor.



ILD = femmina filettata femmina/  
female thread coupler.

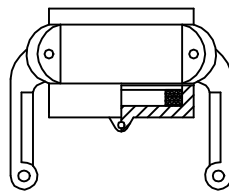


ILF = maschio filettato maschio/  
male thread adaptor.

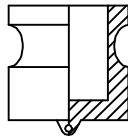


ILB = femmina filettata maschio/  
male threaded coupler.

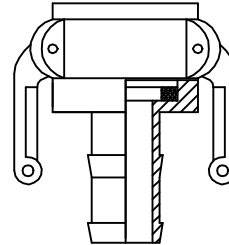
ILDW = femmina a saldare/  
butt weld coupler.



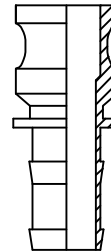
ILL = tappo femmina/  
dust cap.



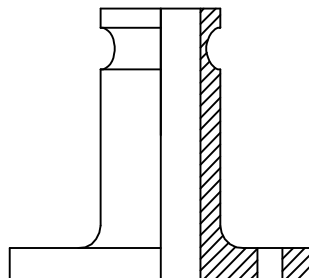
ILP = tappo maschio/  
dust plug.



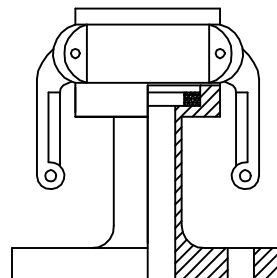
ILC = femmina per tubi flessibili/  
hose shank coupler.



ILE = maschio per tubi flessibili/  
hose shank adaptor.



ILLAS = maschio flangiato/  
flanged adaptor.



ILLBS = femmina flangiata/  
flanged coupler.

### Caratteristiche tecniche

Le estremità degli attacchi rapidi possono essere fornite filettate, flangiate, a saldare o con codolo portagomma.

### Materiali

Alluminio, bronzo, acciaio al carbonio, acciaio inossidabile.

### Pressioni

da 1/2" a 2" : 20bar e vuoto;  
da 2.1/2" a 4" : 15 bar e vuoto;  
da 5" a 6" : 10 bar e vuoto;  
oltre 8" : 5 bar e vuoto.

### Temperatura

In funzione delle guarnizioni usate.

### Technical characteristics

The ends of quick couplings can be independently supplied threaded, flanged, for welding or to be fitted in rubber hoses.

### Materials

Aluminium, bronze, carbon steel, stainless steel.

### Pressures

from 1/2" to 2" : 20 bar and vacuum;  
from 2.1/2" to 4" : 15 bar and vacuum;  
from 5" to 6" : 10 bar and vacuum;  
major of : 5 bar and vacuum

### Temperatures

According in gasket resistance.