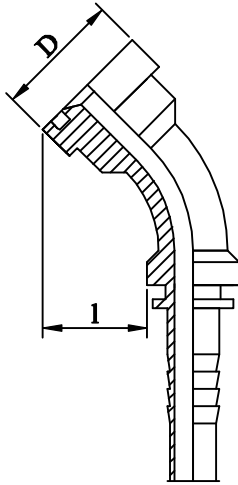
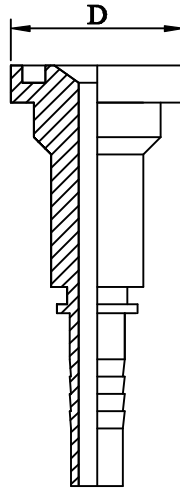


**HYDRAULIC FITTINGS SAE J518 FLANGE**  
**in galvanized steel and stainless steel AISI 316**

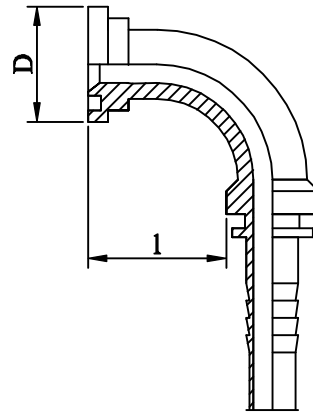
**RACCORDI OLEODINAMICI A FLANGE SAE J518**  
**in acciaio zincato e inox AISI 316**



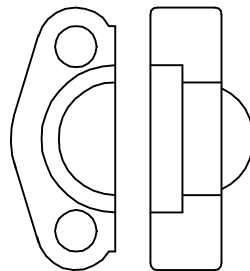
**90° SAE flange**  
**Flangia SAE 90°**  
**S3K = flangia SAE 3000**  
**S6K = flangia SAE 6000**



**SAE straight flange**  
**Flangia diritta SAE**  
**S3D = flangia SAE 3000**  
**S6D = flangia SAE 6000**



**90° SAE flange**  
**Flangia SAE 90°**  
**S3K = flangia SAE 3000**  
**S6K = flangia SAE 6000**



**SAE split flange**  
**Semiflangia SAE**  
**S3SF = semiflangia SAE 3000**  
**S6SF = semiflangia SAE 6000**

Diam. tubo/ I. O. hose	12	16	20	25	32	40	50
		1/2	5/8	3/4	1"	1.1/4	1.1/2
SAE 3000	1/2	3/4	3/4	1"	1.1/4	1.1/2	2"
	D=30.3	D=38	D=38	D=44.6	D=51	D=60.5	D=71.6
	3/4			1.1/4	1.1/2		
	D=38		D=44.6	D=51	D=60.5		
SAE 6000	1/2		3/4	1"	1.1/4	1.1/2	2"
	D=31.8		D=41.5	D=47.7	D=54.2	D=63.7	D=79.6
			1"	1.1/4			
			D=47.7	D=54.2			

**N. B.: per la misura l vedere scheda tecnica (for length l see data sheet)**